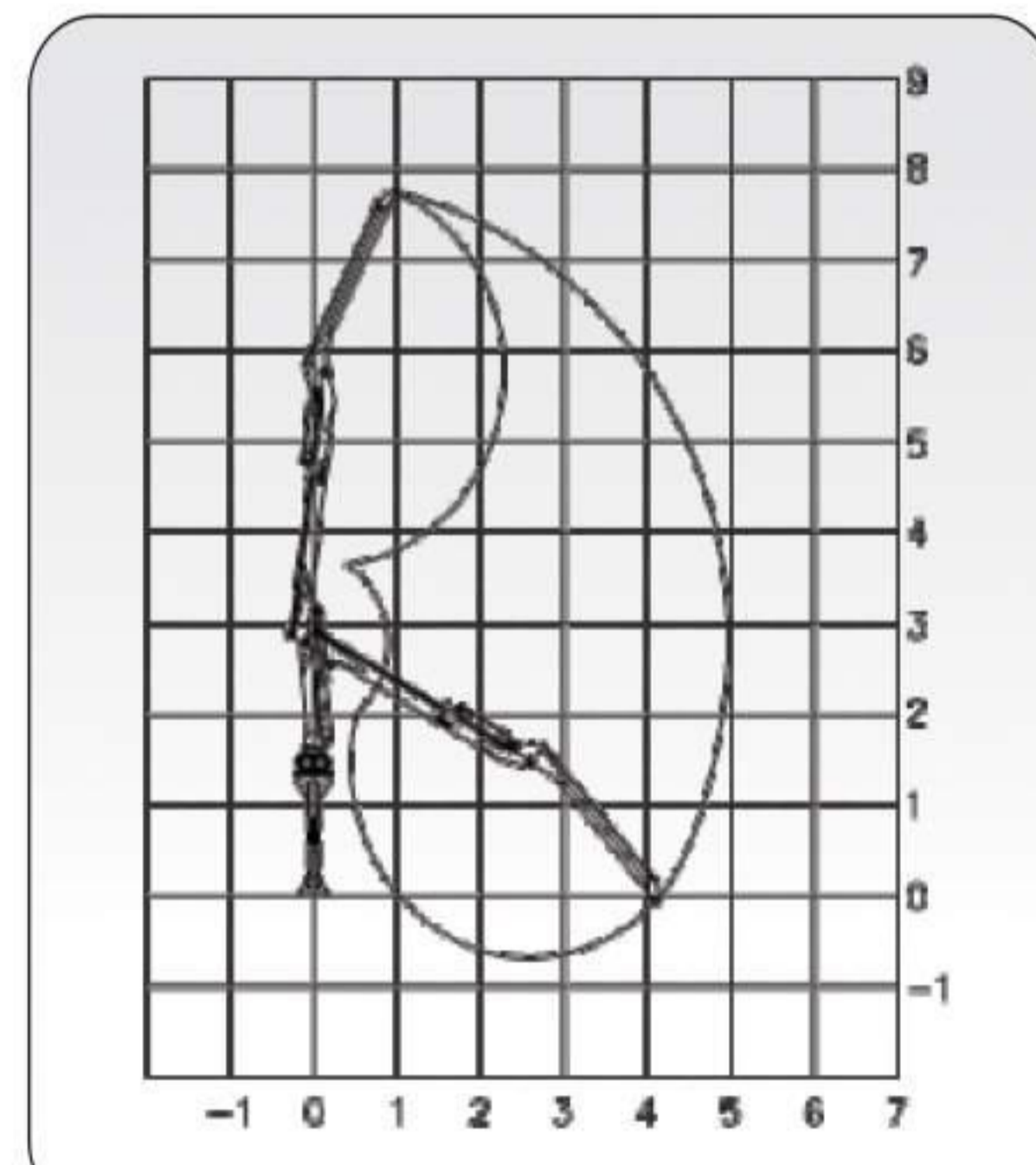


ALLOWED LOAD FOR STANDARD RADIAL LOADER

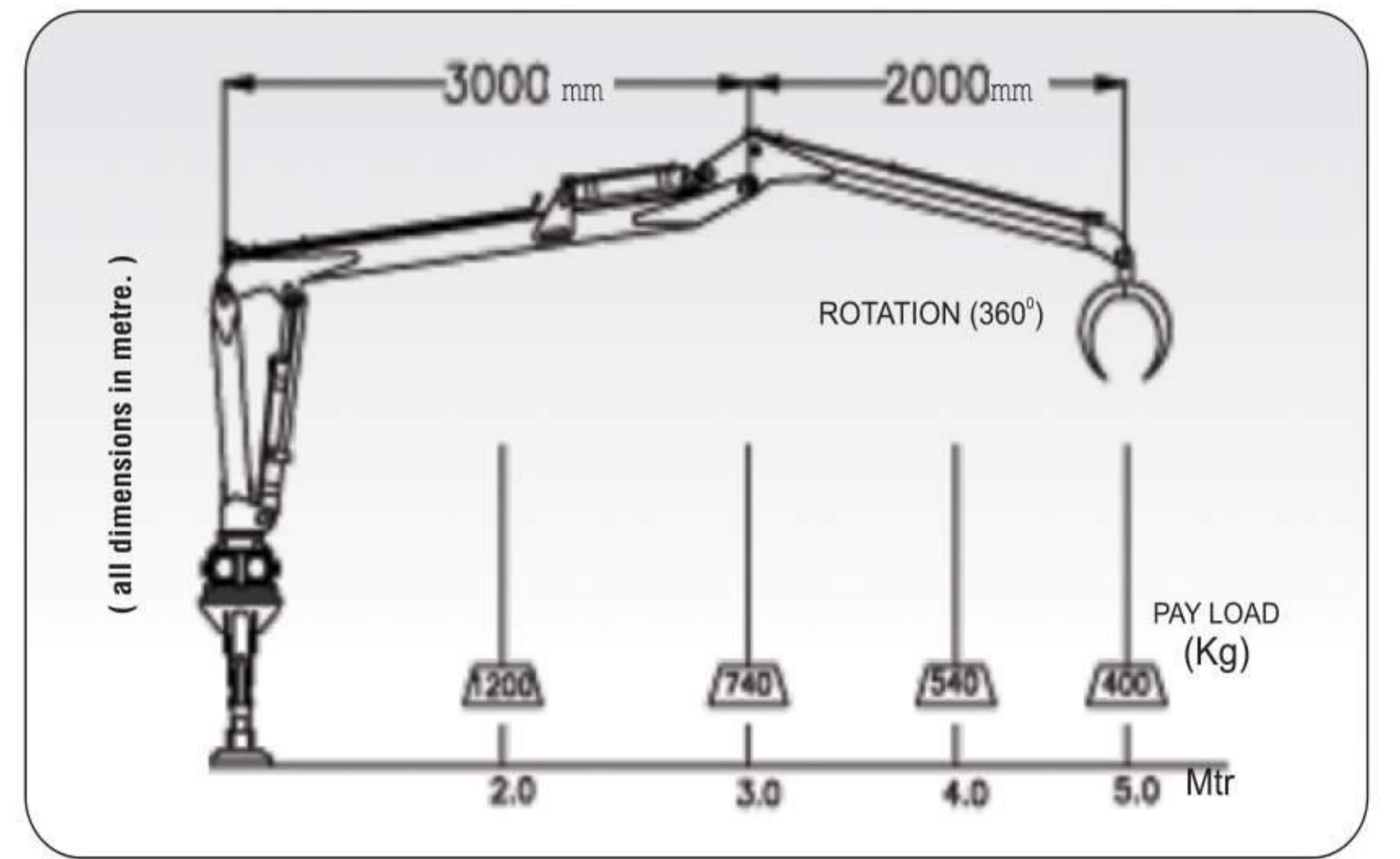
* MIN TRACTOR HP 35
* PATENT PENDING.

Salient Features of Radial loader

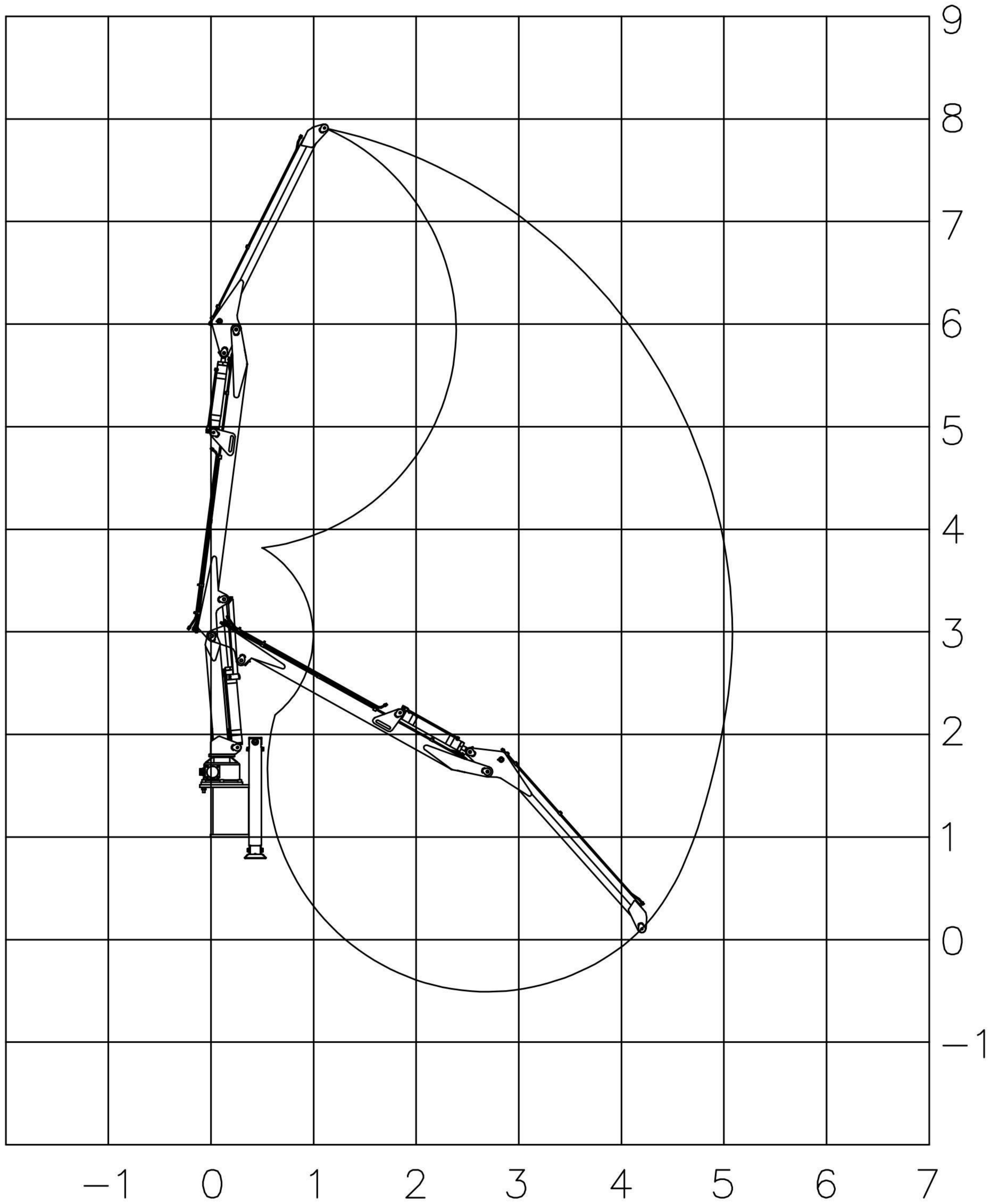
- Max lifting height 20ft.
- Detachable and mounted at side.
- Practical output \approx 8-12 tons* / hr
- 360° Continuous Grabber rotation + 360° arm rotation
- Can be mounted on any 45HP + category tractor
- Max weight that can be handled per grab \approx 400Kg
(depends upon the attachments used)
- Diesel consumption of tractor in said application \approx 3.5 liters/hr
- Ideal for handling loose material viz, logs sticks, sugarcane etc.,
* depends upon the density of raw material being handled.



LIFTING AND DIGGING DIAGRAM FOR RADIAL LOADER



PAY LOAD FOR RADIAL LOADER



LIFTING AND DIGGING DIAGRAM FOR STANDARD RADIAL LOADER
(all dimensions in metre.)