



**AV490**  
SKID STEER LOADERS

**TOUGH  
AGILE  
FUEL SAVER**

**JOYSTICK DRIVE**



[www.bullindia.com](http://www.bullindia.com)

## THE BEST ALL ROUNDER

Interchangeable attachments



Sweeper attachment



Concrete mixer attachment



Forklift attachment



6 in 1 bucket attachment



Save 25% more fuel



Backhoe attachment



### RUN ALL DAY

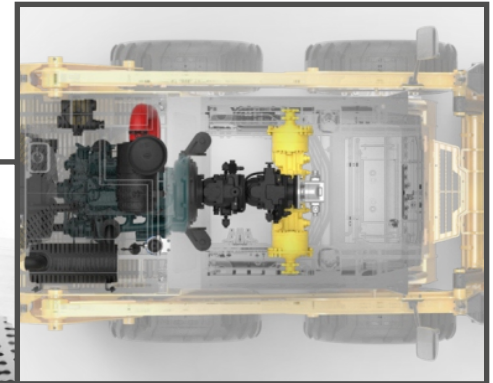
Forget your Fuel Meter

- Fan for Radiator and cooler are directly mounted on Engine which improves efficiency.
- It saves power resulting in lower fuel consumption.



### Easy Serviceability

- Pump is directly coupled to engine via reliable flexible coupling.
- Maintenance free and trouble free operation.
- Pre Cleaner provided for dusty environment.



### WE GIVE YOU EYES BEHIND

Rear Camera



- Rear View Camera gives better visibility, Reduces Blind spots.



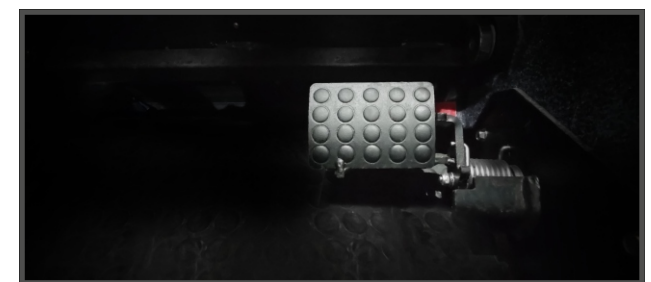
### FUN IN TOUGH WORKS

Inbuilt LED light & Music player



### ADDITIONAL FOOT ACCELERATOR

Foot accelerator for optimal speed management

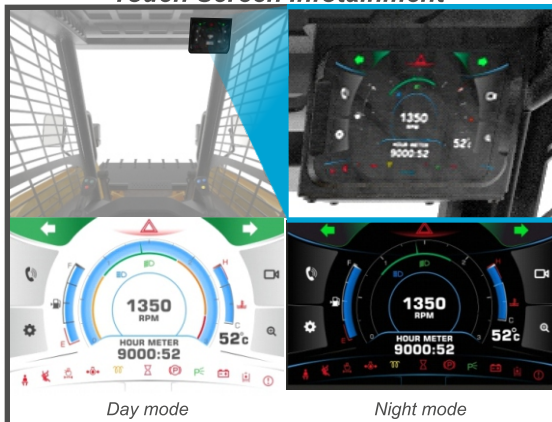






## ALL THE TECH IN TOUCH

### Touch Screen Infotainment



- TFT Resistive touch screen, able to operate even with oily hands.
- Day and Night mode for better visibility.
- Auto Brightness adjustment feature.
- Rear View camera display.



### JOYSTICK DRIVE

Effortless operation with better control.



### OPERATOR SAFETY LOCK

When safety bar is raised, travel and implement hydraulic system will be disabled. Parking brake will also be engaged automatically



### PILOT OPERATED JOYSTICKS

Effortless operation leads to less fatigue and increased operator efficiency



### SUSPENSION SEAT

Standard feature for better operator comfort

### Machine Rating

|                          |       |      |
|--------------------------|-------|------|
| Rated Operating Capacity | Kg    | 655  |
| Tipping Load             | Kg    | 1310 |
| Pump Capacity            | Lpm   | 60.0 |
| System Relief Pressure   | MPa   | 23.0 |
| Max Travel Speed         | Km/hr | 14.0 |

### Engine

|                       |                |       |
|-----------------------|----------------|-------|
| Model                 | KUBOTA         |       |
| Fuel Type             | Diesel         |       |
| Cooling               | Liquid         |       |
| Max.power @ 2700 rpm  | 36.8kW (50 HP) |       |
| Max.Torque @ 1600 rpm | Nm             | 158.6 |
| No.of. Cylinders      | No.            | 4     |

### Weights

|                  |    |      |
|------------------|----|------|
| Operating Weight | Kg | 2700 |
|------------------|----|------|

### Electrical

|            |      |    |
|------------|------|----|
| Battery    | V    | 12 |
| Alternator | Amps | 90 |

### Capacity

|                                   |   |     |
|-----------------------------------|---|-----|
| Fuel                              | L | 48  |
| Engine Oil                        | L | 9.5 |
| Coolant                           | L | 7.2 |
| Hydraulic System (Including Tank) | L | 65  |
| LH Chain Case                     | L | 10  |
| RH Chain Case                     | L | 10  |

### Drive System

|               |   |  |
|---------------|---|--|
| Transmission  | Hydrostatic drive with hydraulic pilot operated variable displacement tandem pump with heavy duty radial piston bidirectional motor |  |
| Type Of Drive | 4WD - Chain Drive   |  |

### Control

|                                |   |  |
|--------------------------------|---|--|
| Vehicle Steering               | Skid steering, Controlled by a left hand side Single Joystick |  |
| Loader Hydraulic Tilt And Lift | Single Joystick on right hand side                            |  |
| Front Auxiliary (std)          | Electrical switch on right hand side Joystick                 |  |

### Tyre

10X16.5-10 PR, 12X16.5-10 PR (optional) Heavy/Medium Duty, Solid Tyre

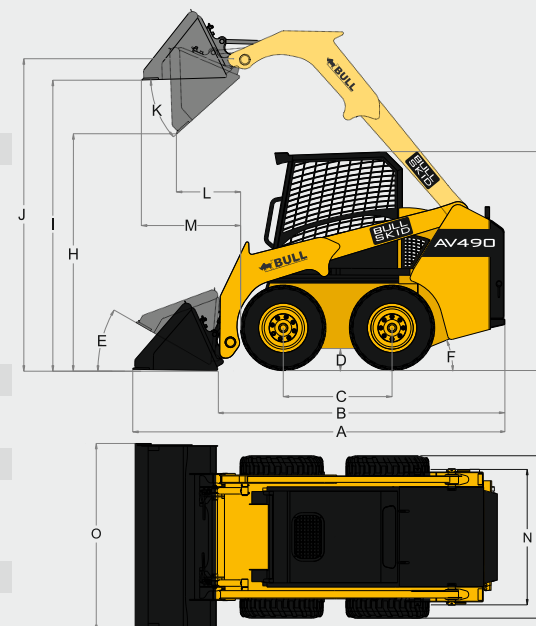
### Attachments

Backhoe, Sweeper, Pallet Fork, Concrete mixer etc.,

### Optional

Self Leveling Valve, Anti stalling feature, AC Cabin, Aux. Hydraulics High Flow

## DIMENSIONS



|                |                            |         |          |
|----------------|----------------------------|---------|----------|
| A              | Over All Length            | 3282 mm | 10'-9.2" |
| B              | Length Without Attachment  | 2511 mm | 8'-2.8"  |
| C              | Wheel Base                 | 980 mm  | 3'-2.6"  |
| D              | Ground Clearance           | 204 mm  | 8.03"    |
| E              | Roll Back Angle            | 30°     |          |
| F              | Departure Angle            | 27°     |          |
| G              | Over All Height            | 1970 mm | 6'-5.5"  |
| H              | Dump Height @ 40°          | 2160 mm | 7'-1"    |
| I              | Load Over Height           | 2646 mm | 8'-8.2"  |
| J              | Pin Height                 | 2813 mm | 9'-2.7"  |
| K              | Dump Angle                 | 42°     |          |
| L              | Dump Reach                 | 588 mm  | 1'-11"   |
| M              | Max Reach at Full Height   | 910 mm  | 2'-11.8" |
| N              | Track Width with spec tyre | 1245 mm | 4'-1"    |
| O              | Bucket Width               | 1580 mm | 5'-2.2"  |
| P              | Width Over Tyres-Standard  | 1500 mm | 4'-11"   |
| Turning Radius |                            |         |          |
|                | Bucket                     | 2039 mm | 6'-8.2"  |
|                | Tyre                       | 1125 mm | 3'- 8.3" |
|                | Rear Chassis               | 1426 mm | 4'-8.1"  |

\*All specifications are subjected to change by BULL without prior notice.

# SMART KID

New Class of Backhoe Loader

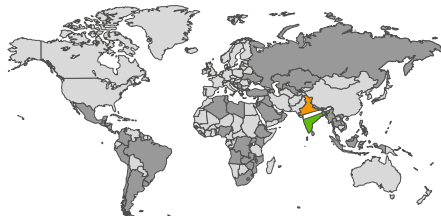
JOYSTICK DRIVE



Widest Range Of Earth Moving Machines



NOW IN **68+**  
**COUNTRIES**  
165+ SERVICE CENTRES



+91 98422 87770

sales@bullmachine.com

exports@bullmachine.com

f y t / bullmachines

Dealer

www.bullindia.com