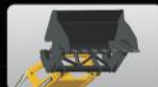




40 types of application specific quick interchangeable loader bucket options



Booster Bucket
(12.98 ft Dump Height)



Bale Grabber



Grabbing Fork



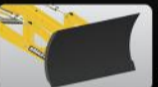
Fork Lift



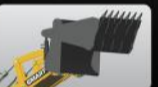
Stone Bucket



Sugarcane Grabber



Detachable Dozerblade

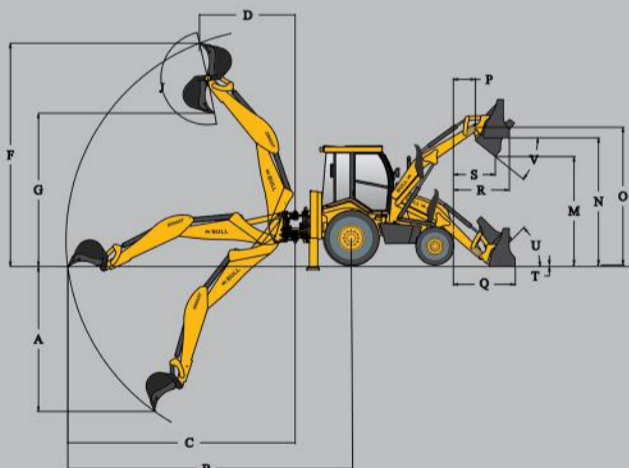


6 in 1 Bucket

The Real SMART Machine

- > Less in Investment
- > High on Performance
- > More in Earnings
- > Nationwide extensive sales & service network

- ENGINE** : Kirloskar 4R 810T, Turbo charged BS-III diesel engine
44.8KW (60 HP) at 2400 rpm.
- TRANSMISSION**: CARRARO Synchroshuttle transmission with integral torque converter.
- DRIVE** : 2WD & 4WD options available
- STEERING** : Power steering.
- ELECTRICALS** : 12 V battery system.
- TYRES** : FRONT / 2WD : 9.00 X 16 -16PR
/ 4WD : 12.5/80 X 18-12PR
REAR (2WD/4WD) : 14.00X24-16/20 PR
- SPEED** : Forward max 29 to 30 km / hr
Reverse max 9.3 km / hr
- HYDRAULICS** : **SMART** technology hydraulics : 2900 p.s.i (200bar)
Pump flow : 120 lpm @ 2400rpm.
- WEIGHT** : Shipping : 6720 Kgs
- OPTIONS** : > Excavator Buckets
Capacities • 0.23 cu.m (standard)
Options • 0.1 cu.m • 0.17 cu.m 0.21 cu.m
- > 4 Wheel drive > Taper Ditching bucket
 - > 6 in 1 Bucket > Square hole bucket
 - > Ditch Cleaning bucket > Ripper tooth
 - > Rock breaker
 - > Loader booster with 12.98 ft dump height



EXCAVATOR SPECS		in (m)	in (ft-inch)
Standard bucket capacity		0.23 cum (standard)	
A	Max. dig depth	3.56 m	11 ft - 8.1 in
B	Reach at ground level to rear wheel center	6.32m	20 ft - 8.7 in
C	Reach at ground level to slew centre	5.1 m	16 ft - 8.7 in
D	Reach at full height to slew centre	2 m	6 ft - 6.7 in
F	Max. working height	5.4 m	17 ft - 8.5 in
G	Max. load over height	3.74 m	12 ft - 3.2 in
J	Bucket rotation - power	200°	
	Bucket tear out force	5610 kgf	
	Dipper tear out force	2200 kgf	

LOADER SPECS	With link bracket		Without link bracket	
	meter	ft-inch	meter	ft-inch
Standard Bucket Capacity				
M	2.93 m	9 ft - 7.3 in	2.96 m	9 ft - 8.5 in
N	3.39 m	11 ft - 1.4 in	3.39 m	11 ft - 1.4 in
O	3.61 m	11 ft - 10 in	3.61 m	11 ft - 10 in
P	0.42 m	1 ft - 4.6 in	0.42 m	1 ft - 4.6 in
Q	1.60 m	5 ft - 2.8 in	1.47 m	4 ft - 9.84 in
R	1.42 m	4 ft 7.8 in	1.28 m	4 ft - 2.4 in
S	1.1 m	3 ft - 7.2 in	0.89 m	2 ft - 11 in
T	0.08 m	3 inch	0.1 m	4 inch
U		50°		49°
V		45°		45°
L	Width over bucket (standard) 2.22 m			
	Bucket Break-Out Force 7178 kgf			
	Loader Arm Break-Out Force 4606 kgf			
	Pay Load 1560 kgf			

Why BULL SMART ?

- > Low owning & operating cost resulting in better ROI.
- > **BULL SMART** can load Hywa / Full body trucks without using ramp, through Booster bucket option on loader.
- > 40 types of application specific quick interchangeable bucket options using BQRSL mechanism.
- > More than 10,000 Satisfied customers across India - A testimony of BULL's performance & service support network
- > BULL, recognized as Inhouse R&D unit by ministry of science & technology since 2004.
- > "State of the art" Manufacturing plant with powder coating process for extended life.
- > **SMART** Technology Hydraulics – High on Performance, Low on power consumption.



BULL MACHINES PVT.LTD

SF No.5/1 A, L&T Bypass Junction, Trichy Road.
Coimbatore- 641 103 INDIA
Ph : 0422-3291 291 /3290 281 /6575 753 /98426 70184
Mob : 098422 87770
Email : sales@bullmachine.com Net: www.bullindia.com

Regional Office :

H-101, Sector - 63, Noida - 201 301. INDIA
Ph : 0120 - 325 6574, 4751 333 (7 lines)
Telefax : 0120 - 2427 165, Cell : 093120 69285,
email : dro@bullmachine.com

Dealer :

CUSTOMER CARE : 0422 - 3922 222

*All dimensions, shapes, weight & specifications may have allowed variance. The information contained in this leaflet is for illustration purpose only, BULL reserves the right to change without prior notice.